



ART. 21000020 - CLASSIC

**CLASSIC DOUBLE CEREAL DISPENSER (2 X 3L)**

**CEREAL DISPENSER**



**TRITAN™**



38 x 20 x H 60 cm



2 x 3 L



14 kg



50x47xH32cm

✓ **Perfect for small hotels or accomodations**

✓ **Guaranteed stability**

✓ **Practical use for two different types of cereal**

## AVAILABLE COLORS



cherry



wengé

## DESCRIPTION

Base made of solid cherry wood from "Tierra del Fuego". Highly resistant non-toxic paint. Mirror polished stainless steel lids . Chromed steel rods. 3 liter tubes and monobloc cones manufactures by mold injections with "TRITAN" without glue, bisphenol A free. Rubber fans. Functional knobs for easy portioning. Food certified tubes, cones and fans. Removable 18/10 stainless steel drip tray. Maximum height of cups 9 cm. Available in wengé and natural colour.

## MATERIALS

Lenga hardwood - also known as cherry from the Land of Fire , Non-toxic satin acrylic varnish , Plastic TRITAN, foodsafe certified, resistant to 25% of alcohol , Plastic PMMA , Mirror-polished stainless steel 18/10



## CLEANING INSTRUCTIONS

### Varnished wood, granit, marble, aluminum

We recommend using a damp cloth. Do not use solvents, detergents or abrasives. Do not immerse in water, dry immediately after cleaning.

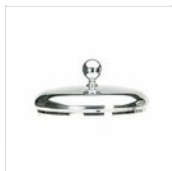
### Plastik, PMMA, TRITAN

It is recommended to hand wash with neutral detergent and to dry it immediately.

### Mirror polished stainless steel

It is recommended to hand wash with a neutral detergent.

## SPARE PARTS



**Round stainless steel lid for classic cereal dispenser (3L) with handle**  
COPERCHIO  
12



**Round cereal container (3L)**  
MULINO  
PACK 3L



**Stainless steel drip plate Ø 14 cm**  
PIATTINO 14

For manufacturing necessities, the mentioned specifications are not binding and could be changed without prior notice. Sales conditions are available upon request. Being wood a natural product, the shown colors are only indicative. Possible color and grain differences in comparison with samples and previous shipments are not reasons for claim. All parts and materials with direct food contact have been tested and approved for food contact according to the rules established by law. All rights reserved - ©Ze Pé.

